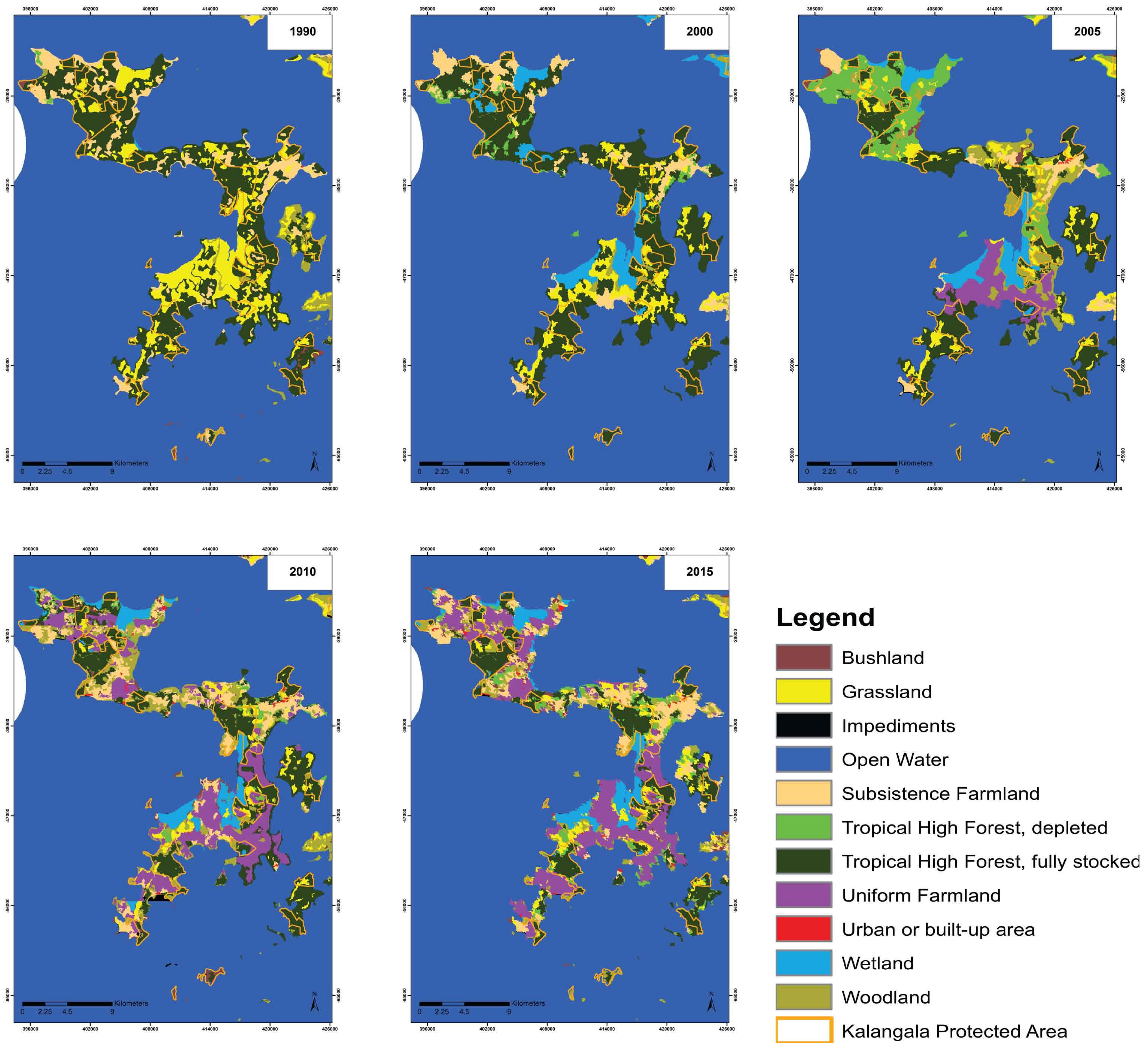


CHANGES IN LAND COVER / LAND USE

BUGALA ISLAND, KALANGALA DISTRICT BETWEEN 1990 AND 2015



THE 1990 TO 2005 MAPS WERE OBTAINED FROM THE MAPPING DEPARTMENT OF NATIONAL FORESTRY AUTHORITY (NFA).

This map has been printed under the Green Livelihoods Alliance (GLA) Programme 'Forested landscapes for equity; with support from Tropenbos International.



Plot 23 JOFRA House,
Kiswa Bugolobi,
P. O. Box 29940 Kampala, Uganda
+256 414 666776
office@ecotrendsalliance.org
www.ecotrendsalliance.org



Visiting address: Lawickse Allee 11
6701 AN Wageningen (first floor)
Mailing address: Tropenbos International
P. O. Box 232
6700 AE Wageningen
The Netherlands
Contact: +31 317 702 020
tropenbos@tropenbos.org