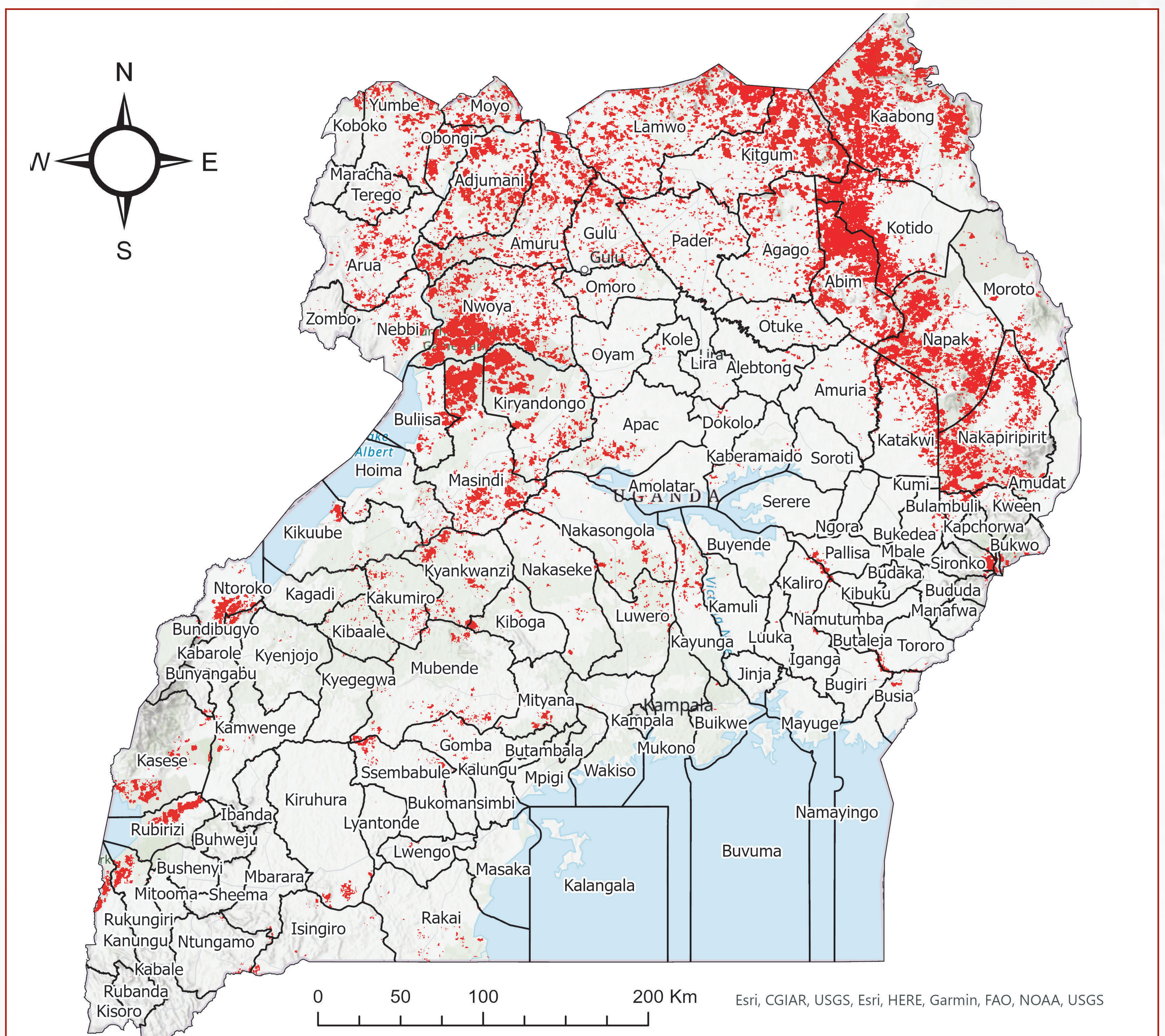


REDUCE OR ELIMINATE RISK OF WILDFIRE EVENTS FOR THE BENEFITS OF SUSTAINABLE USE OF FOREST AND TREES IN CLIMATE SMART LANDSCAPES

Occurrence of wildfires in Uganda Wildfires Mostly occur in North, North Eastern and Eastern Uganda and nearly all are human-caused.

Where we work on pilot wildfires - Bugoma – Masindi Landscape in Western Uganda (Hoima, Buliisa, Kikuube and Masindi districts)



WHY THE NEED TO ENGAGE IN WILDFIRE DISCUSSIONS?

- Landscapes that once burned only at long intervals are now burning several times a decade, preventing ecological succession, degrading ecosystems and adversely impacting livelihoods.
- Globally and nationally, wildfires are increasingly gaining attention due to occasioning of economic losses and adverse contribution to climate change through releasing sequestered carbon and destroying carbon sinks.
- New developments such as oil and gas exploitation are compounding the wildfire risks of already existing fire-prone agro-commodities (sugar cane, pine and eucalyptus plantations)

WHY PRO-ACTIVE FIRE MANAGEMENT AS MODEL?

- To reduce wildfire risks through interventions by local stakeholders who will benefit from more sustainable management of forests, rangelands and farming systems.
- To focus on local communities surrounding forests and rangelands at risk, immigrants and refugees that contribute to or are affected by wildfires through promoting locally-owned fire management solutions.
- Promote a landscape approach through creating collaboration between and among stakeholders.
- Through the landscape approach, integrate all disintegrated wildfire management approaches by the different stakeholders for cohesion and effectiveness.

TARGETS WE WANT TO ACHIEVE

- Work with stakeholders to improve their capacities to make decisions, apply practices, think about the results and adopt new methodologies that support resilience.
- Create collective ability and shared vision through facilitating a landscape platform for affective decision-making in combating wildfires.
- Influence the integration of wildfire management into key stakeholder documents such as District Development Plans, private company Health Safety and Environment and improve government agency wildfire management strategies.
- Through the stakeholder platform, produce a landscape wildfire management strategy to support the management of risks of wildfires. Post project, landscape strategy shall be cascaded onto other landscapes and scaled up into a national wildfire management strategy.



For more information;
Plot 23 JOFRA House, Kiswa Bugolobi. P.O. Box 29940 K'la, Uganda, +256 414 666 776
www.ecotrendsalliance.org